



GMT MONTHLY MEMBERSHIP PROGRESS REPORT

Results as of: 4/30/2019

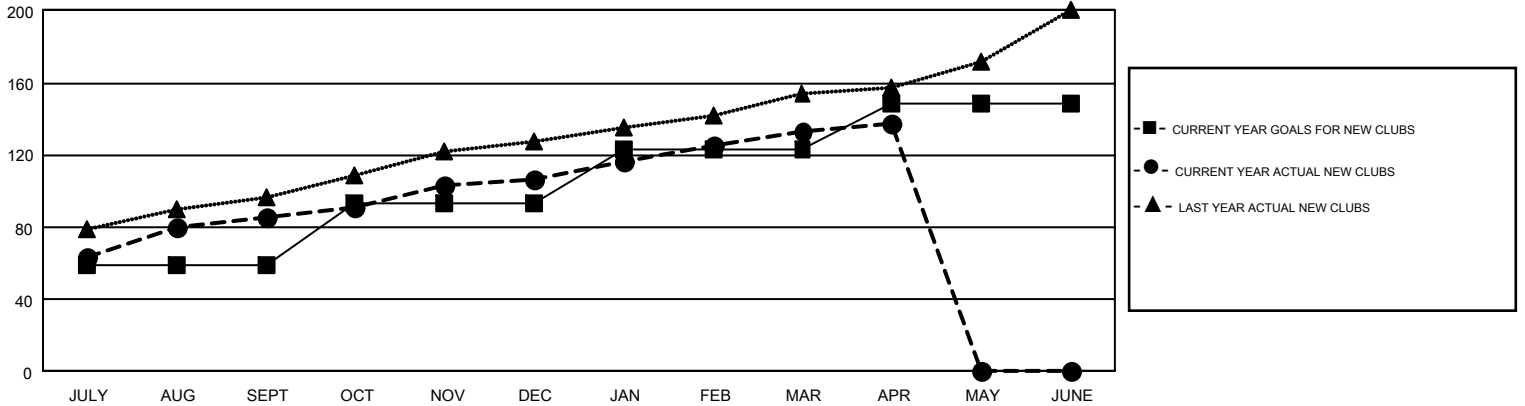
GMT Constitutional Area 6, Group F

GMT: N S SANKAR

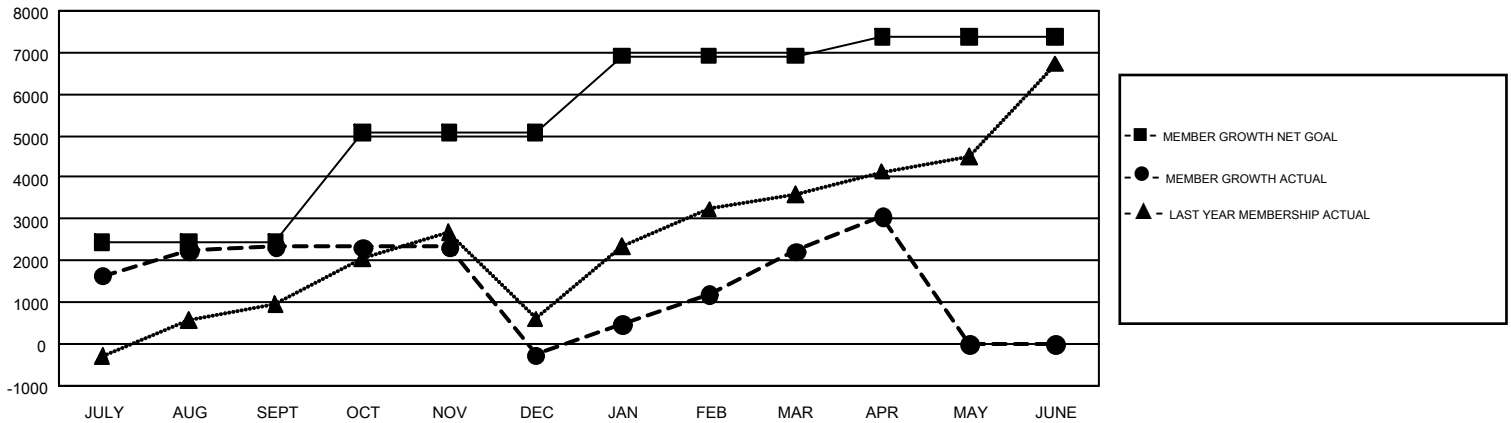
REPORT DOES NOT INCLUDE CLUBS IN UNDISTRICTED AREAS.

Clubs				Members			
RESULTS FOR 2018-2019				RESULTS FOR 2018-2019			
QUARTER	NEW CLUB GOAL	NEW CLUBS	DROPPED CLUBS	QUARTER	MEMBER GROWTH NET GOAL	MEMBER GROWTH ACTUAL	DROPPED MEMBERS ACTUAL (including transfers)
JULY/AUG/SEPT	59	86	10	JULY/AUG/SEPT	2,448	5,064	2,279
OCT/NOV/DEC	34	21	66	OCT/NOV/DEC	2,630	1,863	4,353
JAN/FEB/MAR	30	26	8	JAN/FEB/MAR	1,832	4,209	1,125
APR/MAY/JUNE	25	4	0	APR/MAY/JUNE	477	1,511	611

GOALS AND ACTUAL NEW CLUBS CUMULATIVE



GOALS AND ACTUAL MEMBERS CUMULATIVE



DROPPED CLUBS: 84	1,327 CLUBS OF 2,238 ADDED 1 OR MORE NEW MEMBERS	GENDER DISTRIBUTION MALE 72,811 (78.86%) FEMALE 19,518 (21.14%)
DROPPED MEMBERS DECEASED 209 CLUB CANCELLED 1,827 OTHER 6,331 <hr/> TOTAL 8,367	CLICK HERE FOR CUMULATIVE MEMBERSHIP DATA	TOTAL FAMILY UNIT MEMBERS 33,422 FAMILY MEMBERS PAYING HALF DUES 19,647